



Invest in Sombor



WELCOME TO SOMBOR!



70.818

Number of Inhabitants
(census 2022)



42.300

Working Age Population
(est. 2022)



4.143

Registered Unemployed
(Oct 2024)



1.216 km²

City Area



1024

Number of Business
Enterprises (2023)



82.791 RSD /

708 €

Average Net Salary
(Oct 2024)

Sombor is the administrative, educational and medical center for almost 156,000 inhabitants living in the Zapadnobacka district

CONNECTIVITY

Planned regional highway Backi Breg -
Sombor - Kikinda – Nakovo - Romania

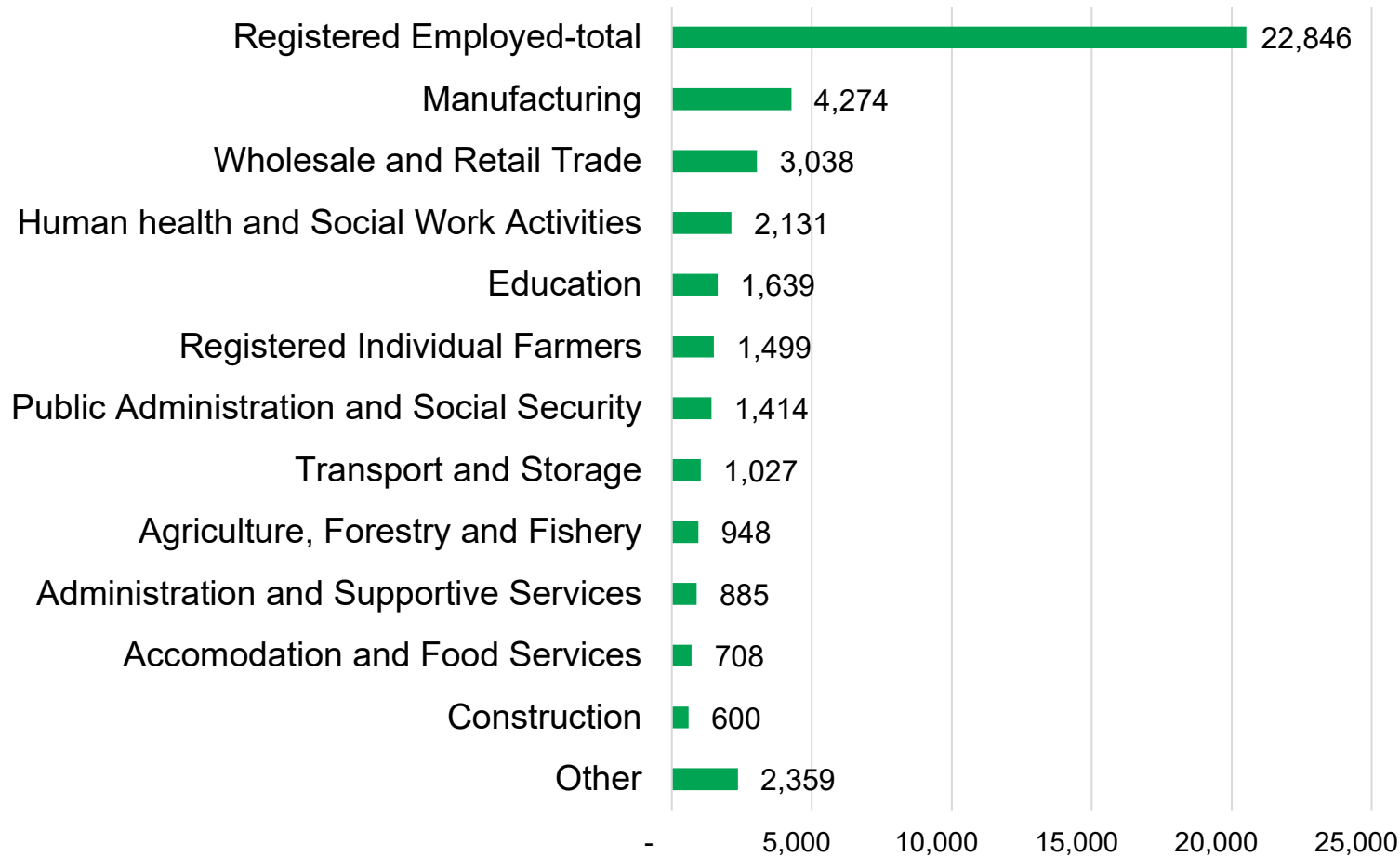




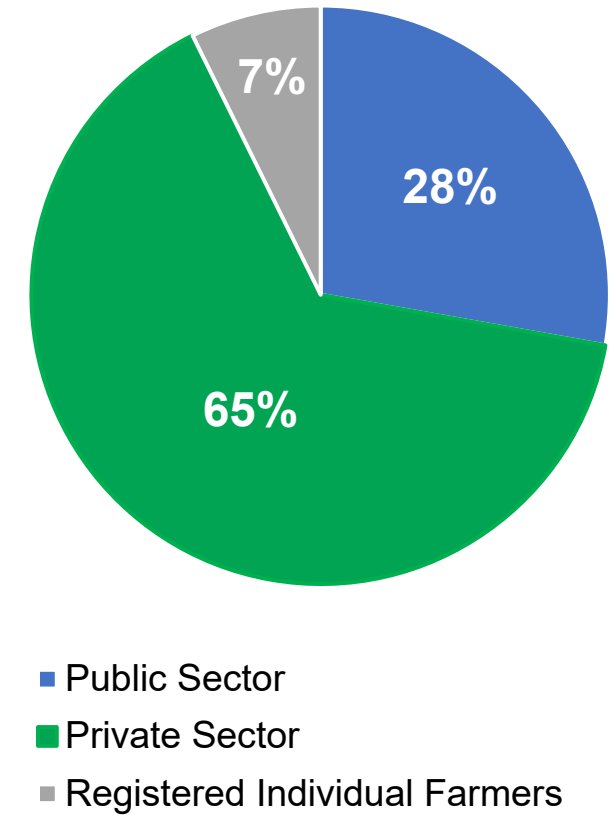
Doing Business in Sombor Area

INDUSTRIAL HERITAGE

REGISTERED EMPLOYED, IV 2023



EMPLOYMENT BY SECTOR, XII - 2023



Source: Statistical Office of the Republic of Serbia

INDUSTRIAL PROFILE

TOP COMPANIES 2023

FDI	Fiorano Knitted and crocheted socks & underwear	1,600		Somborelektro Construction services	148
FDI	ROSSI Shoes Footwear	550		Severtrans Transportation Company	143
FDI	Somboled Dairy industry	360	FDI	Sunce - Bimal Food production	120
FDI	Guma S doo Automotive	220	FDI	EBM Papst Machine industry	120
	Sinagoga Retail	203			



Available Qualified Workforce

AVAILABLE QUALIFIED LABOR FORCE

Secondary School	Study Programs	Students per Year
Technical School Sombor	Computer control technician, Mechatronics Technician, Welding technician, Electrician, Auto mechanic, etc.	240
School of Economics***	Bussines administrator, Financial administrator, Economist, Merchandiser etc.	201
Food Processing and agriculture***	Agricultural technician, Food technician, Veterinarian, Agriculture Mechanic etc.	222
Technical School Kula	Machinist, Auto mechanic, Driver, Electrician, etc.	145
Technical School Apatin	Auto mechanic, Welding Technitian, Cook etc.	90
Others in district	Gymnasium, Civil engineering and wood processing Secondary School, School of Economics and Trade Kula, Medical school, Musical school etc.	270
Total		1,623
Higher Education	Study Programs	Students per Year
Faculty of Education	Teacher, Librarian, Media Designer in Education	235

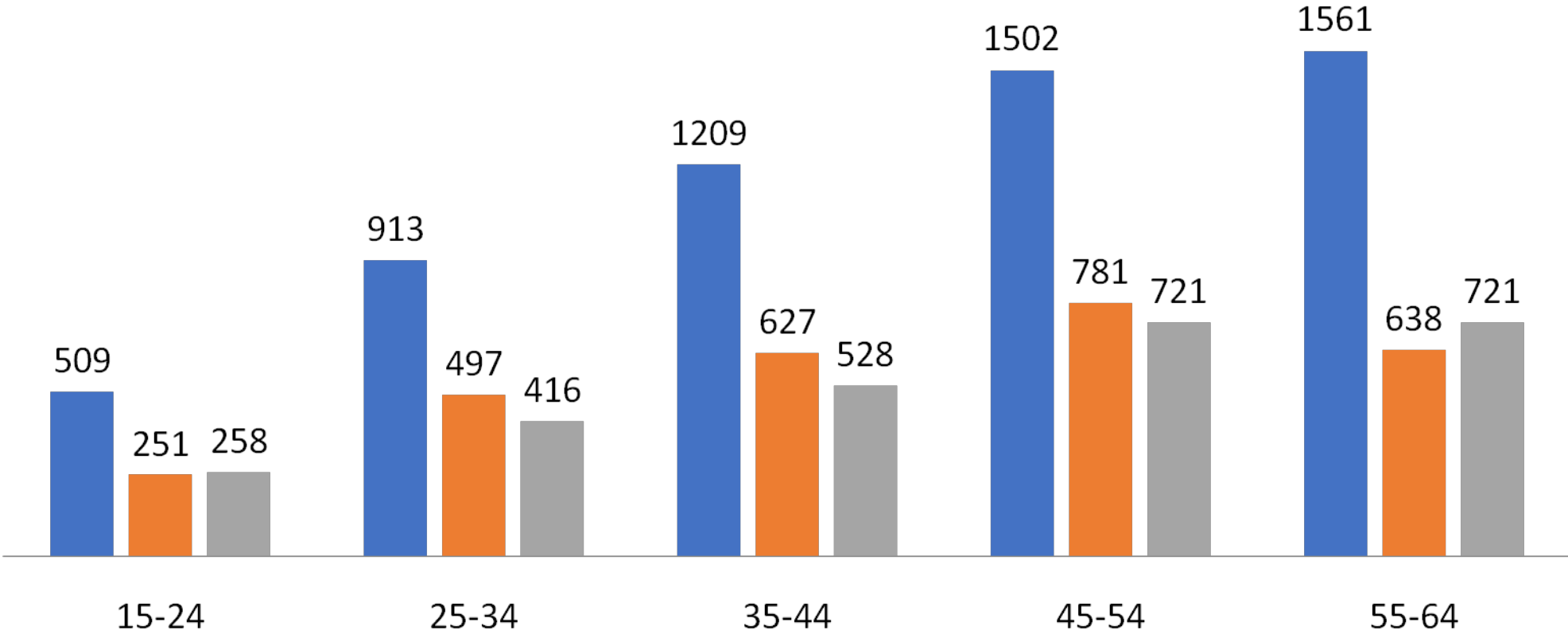
- Sombor is 100 km away from the Univeristy of Novi Sad that has very strong engineering programs

***Starting from school year 2016/2017 these two schools are taking part in **Dual education** program that could be expanded to include other schools in line with market needs

AVAILABLE QUALIFIED LABOR FORCE – City of Sombor

UNEMPLOYED BY AGE GROUPS AND GENDER

■ Total ■ Women ■ Men



COMPETITIVE OPERATING COSTS - UTILITIES

WATER



1,1 EUR/m³

WASTE WATER



1,1 EUR/m³

ELECTRICITY



TBD EUR/kwh

GAS



0,48 EUR/m³

All prices are average and include VAT



“Ready to Build” Location

“READY TO BUILD” GREENFIELD LOCATION

Location Information	
Size	Total size 230 ha, available <10ha
Ownership	City of Sombor
Distance from the City Center	2 km (Sombor)
Gas	There is natural gas installation with low and medium pressure network inside zone
Water	Yes
Sewage & Wastewater processing plant	Yes
Electricity	Inside industrial zone, there are 5 sub-stations. Each one 630 Kw. 4MW is available (8MW future optional)
Other	All roads in the Industrial zone are adequate for heavy trucks. Also, there is connection to the state roads no. 12, category Ib and no. 15, category Ib



Land purchase procedure


- Step 1/Day 1-30 – submitting the Letter of intent
 - ✓ List of land parcels – mandatory
 - ✓ Internal checks and sending the request to the City Council
 - ✓ After approval of the City Council, the City Assembly adopts the decision to publish land for sale by public auction
- Step 2/Day 30-60
 - ✓ Public auction is advertised in the local newspaper. The advertisement is open for 30 days. A fee must be paid in this period to take part in the auction – 50% of the starting bidding price.
 - ✓ Result of the auction is known on the same day.
 - ✓ It is sent for final approval of the City Council.
- Step 3/Day 60-90
 - ✓ Contracting
 - ✓ Final payment date

Other processes regarding land purchase

- In order to obtain the permits, you should find a contractor to produce the architectural and urban projects.
- City services will go over the documentation with your architects before submitting in order to avoid negative decisions and lengthening the process.
- Environmental impact study – also commissioned by the buyer. May not be needed, depending on your specific circumstances.
- You will get a contact point in the City administration to act as liaison with all service providers you need, i.e., cadaster, accounting firm, utility companies.



Obtaining permits

- Processes that you work on independently, with your chosen contractor, on planning construction, can start as soon as you submit your Letter of intent.
 - The turnaround times for various documents are:
 1. 21 days to approve the construction project /"urbanistički projekat" (steps: submitting, advertisement, committee review and adoption)
 2. Deadline for issuing the location permit is 20 days.
 3. Environmental impact study – you commission it, and the City services approve it. Cca. 1 month for producing the study. Depending on your exact type of production, this study may not be needed.
 4. The building permits are issued within 3 days.
 5. Start of works needs to be formally recorded. Works can start on the following day.
 - Steps 1 and 3 can run at the same time.
 - You can start working on your construction project as soon as you select the land you are interested in.
- 

Living in Sombor



COMFORT LIVING AND FUN TO VISIT



National Theater Sombor

Museum

Historical Archives

Library „Karlo Bijelicki“



Art Gallery „Milan Konjović“

Cultural Center „Laza Kostić“

Historical City Hall

Unique Architecture



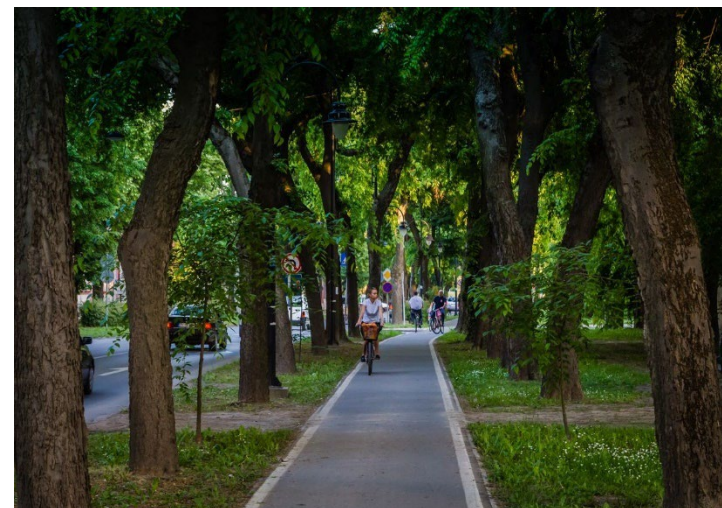
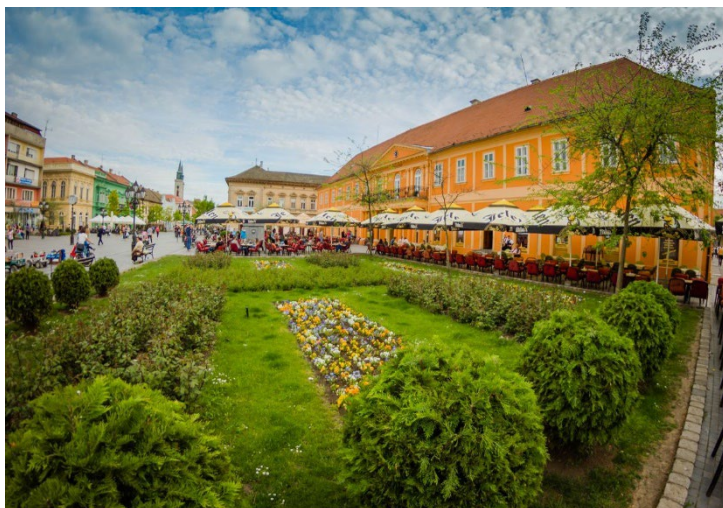
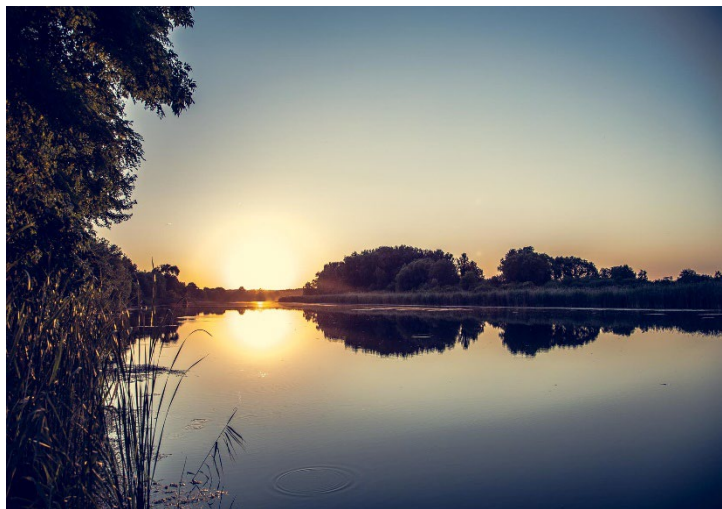
COMFORT LIVING AND FUN TO VISIT

UN Natural Preserve „Bačko Podunavlje“

Hiking & Fishing & Hunting

Outdoor & Indoor Recreation

Living History



THE CITY OF SOMBOR

Thank you for your attention.



www.sombor.rs

Antonio Ratković
Mayor

+381 25 468 133

antonioratkovic@sombor.rs

Office for local economic development

+381 25 468 160

klersombor@gmail.com